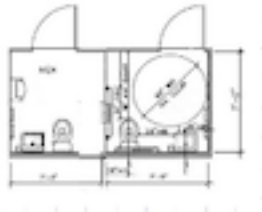


Two Stall Lavatory Building Your Way



ADA Compliant Ground Level Lavatory Buildings
Exterior Plumbing Upgrade Not Shown

Two Stall 1" Walls Lavatory Building

Interior Stalls Dimension: 7' x 7' x 90" or 5' x 7' x 89"

Exterior Lavatory Dimensions: 12' 2" x 7' x 90"

Standard Specifications

Ceramic Fixtures – 9 Second Water Faucet – Mixer Faucet (with Hot Water Option) – Electricity – Exhaust Fan With Motion Sensor – Safety Light With Motion Sensor – Smoke Detector – Paper Towel Dispenser – 9" Toilet Paper Dispenser – Foaming Hand Soap Dispenser – Coin Vinyl Flooring – Clothes Hooks – Inside Privacy Lock – Outside Keyed Door Lock – 1" Graffiti Resistant Walls – Light Switch for Safety Light and Exhaust Fan – Mirror – Wastebasket – Encapsulated Wall Edges – Consumables – 36" Heavy Duty Door with Four Hinges

ADA Stall Features

2 Grab Bars – ADA Toilet Seat – Paddle Handled Door Handle – Paddle Handled Water Faucets – Dual Safety Mirrors – ADA sink and Grid



Baseboard Heat Thermostat



Tankless Water Heater



Waterless Urinal



Electric Hand Dryer



Aluminum Runners



Light Motion Sensor



Water Pressure Pump



300 Gal. Water & Waste Holding Tanks



Air Conditioning



Aluminum Base



Electricity Upgrade



Usage Indicator Door Handle

Options:

Baseboard Heater – Tankless Water Heater – Waterless Urinal – Automatic Hand Dryer – Aluminum Runners – Motion Sensor Light Switch – Water Pressure Pump – Water or Waste Holding Tank – Air Conditioning – Aluminum Base – Upgraded Electrical Service – Usage Indicator Door Handle

Comfort Station Upgrades

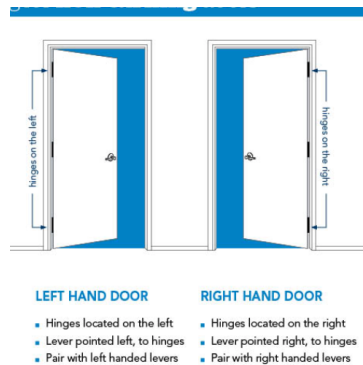


Touch-less Toilet Cistern – Touch-less Faucet – Touch-less Foaming Soap Dispenser – Door Handle Indicator – Encapsulated Exhaust Fan – Heated Water Hose – Connector Hot Box – Encapsulated Water and Waste Tanks – Unique Comfort Station Fixtures

Two Stall Ground Level Lavatory Building

Exterior Plumbing upgrade Not Shown

Door Orientation is Optional and Requires Advanced Notice.
Doors are assumed to be left hand doors unless otherwise ordered.



Optional: 4" Steel Non-Removable Frame Upgrade